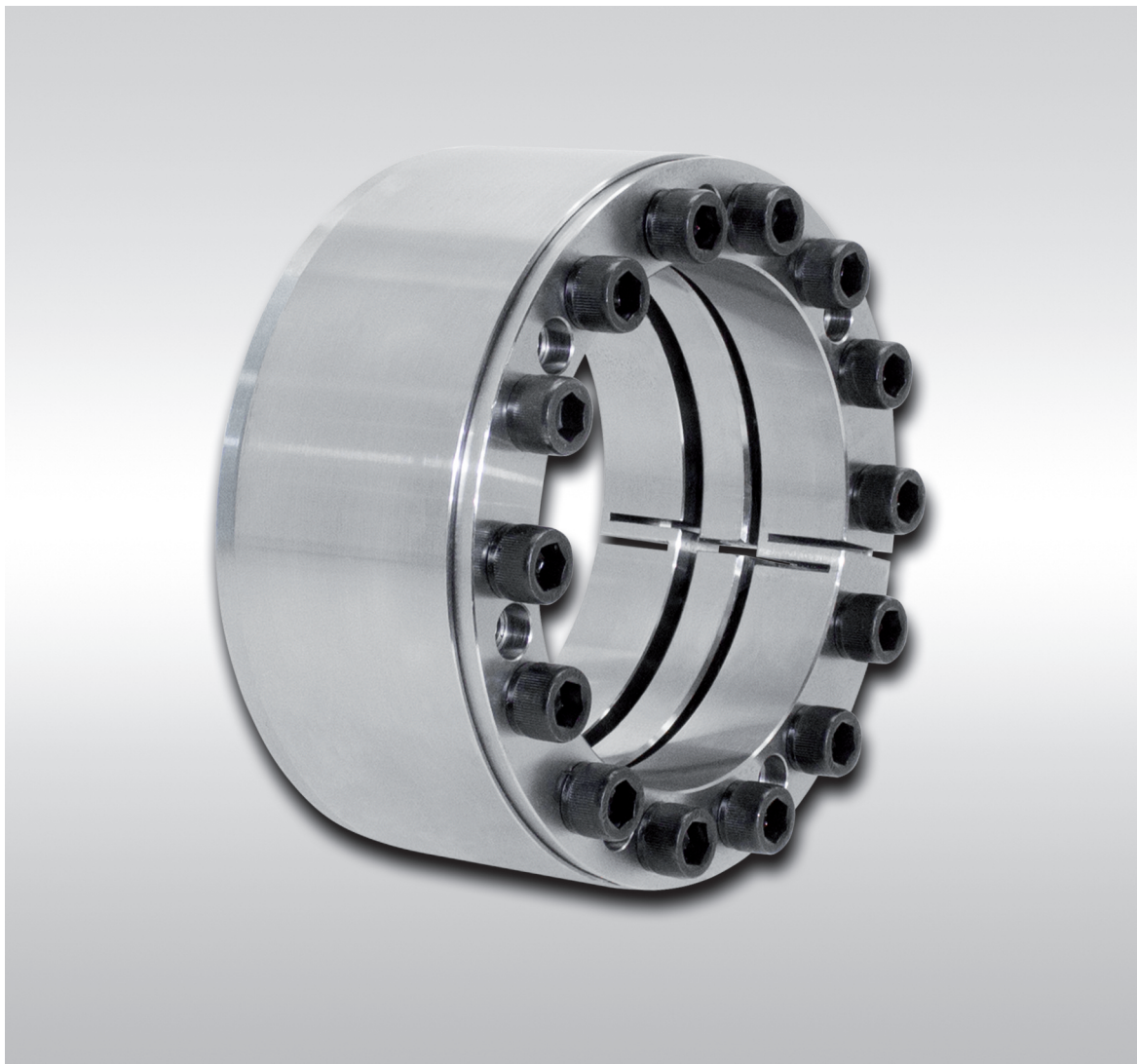


## Cone Clamping Elements RLK 404 TC light

for applications with low contact pressure



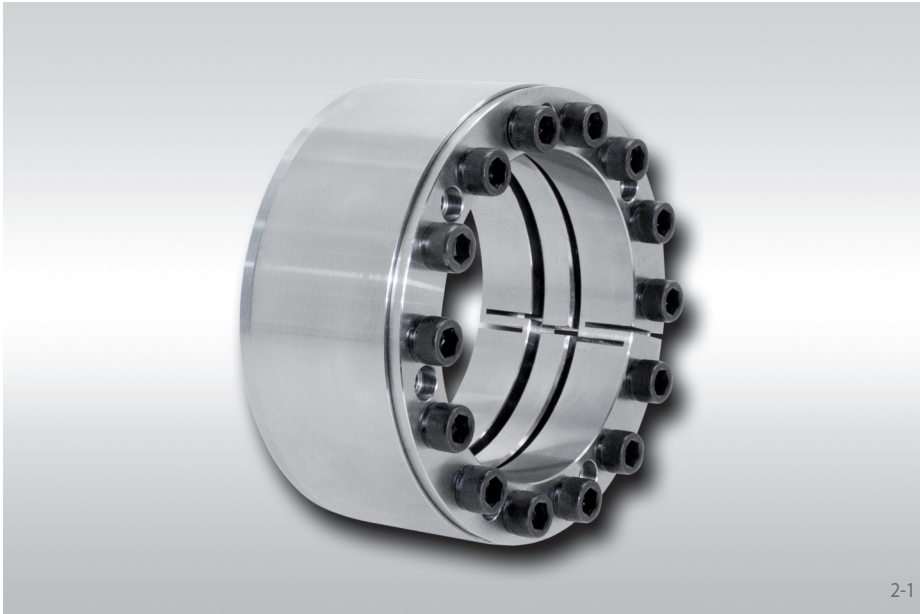
Issue 07/2017 · Technical details subject to change without notice.

E03.052e

# Cone Clamping Elements RLK 404 TC light

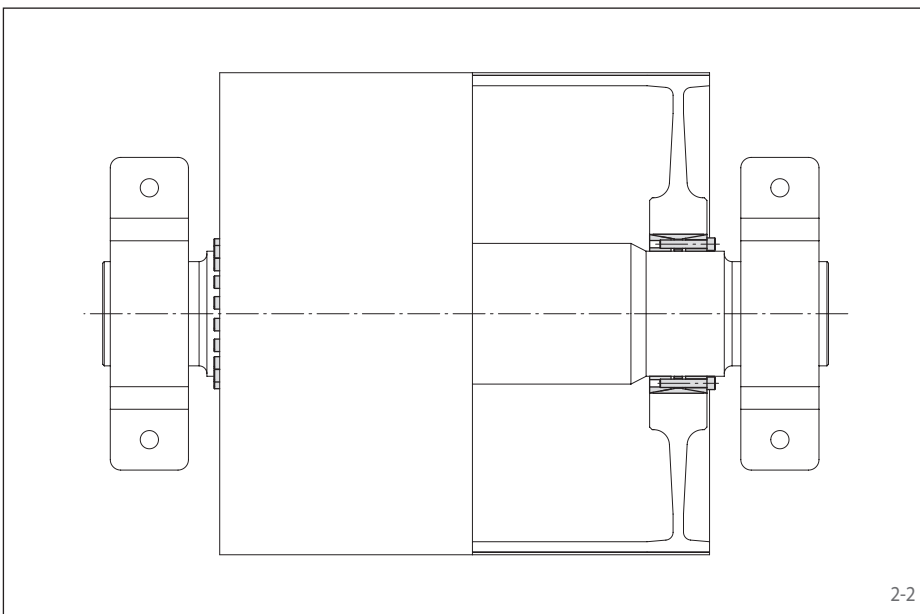
**RINGSPANN®**

for applications with low contact pressure  
Premium quality for high centering accuracy



## Features

- For applications with low contact pressure
- Centres the shaft to the hub. Double slot for high centering accuracy.
- Can be assembled multiple times
- No axial displacement between hub and shaft during clamping procedure
- Highest machining quality
- Transmissible torque of 4 100 Nm up to 722 000 Nm
- For shaft diameters between 70 mm and 600 mm



## Application example

Backlash free attachment of a belt drum to the drive shaft of a conveyor belt with an Cone Clamping Element RLK 404 TC light. The Cone Clamping Element centres the belt drum on the drive shaft. As no axial shift occurs during the clamping process, the axial position of the belt drum in relation to the drive shaft remains unchanged.

## Transmissible torques and axial forces

The transmissible torques or axial forces listed on the following page are subject to the following tolerances, surface characteristics and material requirements. Please contact us in the case of deviations.

### Tolerances

- h8 for shaft diameter d
- H8 for hub bore D

### Surfaces

Average surface roughness at the contact surfaces between the shaft and the hub bore:  
 $R_z = 10 \dots 25 \mu\text{m}$ .

### Materials

The following apply to the shaft and the hub:

- E-module  $\geq 170 \text{ kN/mm}^2$

## Installation

Please request our installation and operating instructions for Cone Clamping Elements RLK 404 TC light.

## Simultaneous transmission of torque and axial force

The transmissible torques M which are shown in the tables apply for axial forces  $F = 0 \text{ kN}$  and conversely, the indicated axial forces F apply to torques  $M = 0 \text{ Nm}$ . If torque and axial force are to be transmitted simultaneously, the transmissible torque and the transmissible axial force are reduced. Please refer to the technical points in catalogue „Shaft-Hub-Connections“.

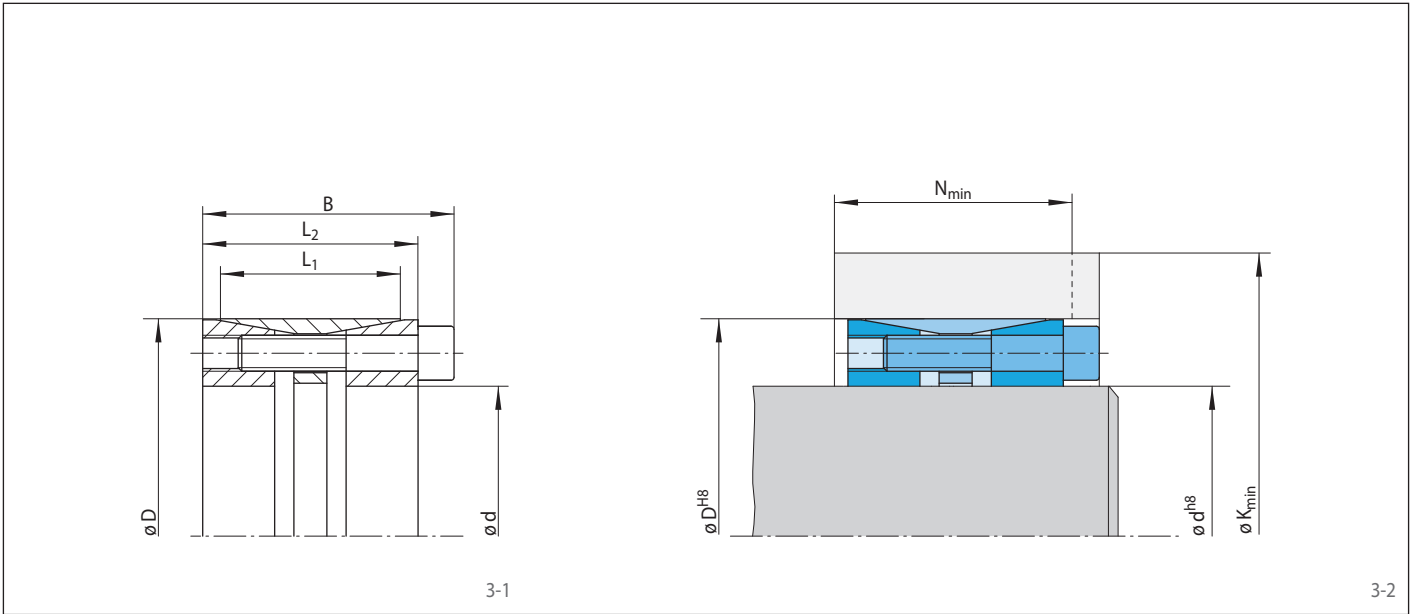
## Example for ordering

Cone Clamping Element RLK 404 TC light for shaft diameter  $d = 100 \text{ mm}$ :

- RLK 404 TC light, size 100 x 145  
Article number 4205-100402-TC0000

# Cone Clamping Elements RLK 404 TC light

for applications with low contact pressure  
Premium quality for high centering accuracy



Dimensions												Technical Data										Article number
Size		Yield strength $R_e$ of the hub material [N/mm <sup>2</sup> ]										Transmissible torque or axial force		Contact pressure at		Clamping screws				Weight		
d mm	D mm	B mm	L <sub>1</sub> mm	L <sub>2</sub> mm	200		320		500		M Nm	F kN	Shaft N/mm <sup>2</sup>	Hub N/mm <sup>2</sup>	Tightening torque M <sub>S</sub> Nm	Number	Size	Length mm	kg			
70	110	70	50	60	170	55	145	49	131	46	4100	120	111	71	48	8	M 10	50	2,5	4205-070402-TC0000		
80	120	70	50	60	195	59	163	51	147	47	5800	150	121	81	48	10	M 10	50	2,6	4205-080402-TC0000		
90	130	70	50	60	210	60	177	52	159	48	7200	160	118	82	48	11	M 10	50	2,9	4205-090402-TC0000		
100	145	82	60	70	235	71	197	61	177	56	10700	210	119	82	84	10	M 12	60	4,1	4205-100402-TC0000		
110	155	82	60	70	242	70	206	61	187	56	11800	210	108	77	84	10	M 12	60	4,5	4205-110402-TC0000		
120	165	82	60	70	259	72	221	62	200	57	14000	240	109	80	84	11	M 12	60	5,0	4205-120402-TC0000		
130	180	91	65	79	291	80	246	69	221	63	19500	300	119	86	84	14	M 12	65	6,6	4205-130402-TC0000		
140	190	91	65	79	307	82	259	70	233	63	22500	320	118	87	84	15	M 12	65	7,1	4205-140402-TC0000		
150	200	91	65	79	314	81	268	69	243	63	24000	320	110	83	84	15	M 12	65	7,5	4205-150402-TC0000		
160	210	91	65	79	329	82	282	70	255	64	27500	340	110	84	84	16	M 12	65	7,8	4205-160402-TC0000		
170	225	106	78	92	359	96	304	83	274	75	37500	440	111	84	133	15	M 14	75	10,8	4205-170402-TC0000		
180	235	106	78	92	366	96	313	82	284	75	39500	440	104	80	133	15	M 14	75	11,3	4205-180402-TC0000		
190	250	116	88	102	374	102	324	89	297	83	44500	470	94	71	133	16	M 14	80	14,8	4205-190402-TC0000		
200	260	116	88	102	399	106	343	92	312	84	53000	530	100	77	133	18	M 14	80	15,7	4205-200402-TC0000		
220	285	124	96	108	430	113	372	99	339	91	66000	600	95	73	206	15	M 16	90	19,9	4205-220402-TC0000		
240	305	124	96	108	498	125	420	106	377	95	96000	800	116	91	206	20	M 16	90	21,5	4205-240402-TC0000		
260	325	124	96	108	522	126	444	107	400	96	109500	840	112	90	206	21	M 16	90	22,8	4205-260402-TC0000		
280	355	130	96	110	573	132	488	110	439	98	135500	970	120	95	415	15	M 20	90	29,0	4205-280402-TC0000		
300	375	130	96	110	587	130	505	110	458	98	145000	970	112	90	415	15	M 20	90	31,2	4205-300402-TC0000		
320	405	156	124	136	640	158	546	135	494	122	206500	1300	108	86	415	20	M 20	110	45,9	4205-320402-TC0000		
340	425	156	124	136	655	157	564	134	513	122	219500	1300	102	82	415	20	M 20	110	48,3	4205-340402-TC0000		
360	455	177	140	155	715	177	611	151	553	137	289000	1600	106	84	567	20	M 22	130	67,9	4205-360402-TC0000		
380	475	177	140	155	729	176	629	151	572	137	305000	1600	100	80	567	20	M 22	130	71,4	4205-380402-TC0000		
400	495	177	140	155	771	181	663	154	601	139	353000	1750	105	85	567	22	M 22	130	74,5	4205-400402-TC0000		
420	515	177	140	155	812	187	696	158	630	141	404500	1950	109	89	567	24	M 22	130	77,8	4205-420402-TC0000		
440	535	177	140	155	827	185	714	157	649	141	423500	1950	104	86	567	24	M 22	130	81,4	4205-440402-TC0000		
460	555	177	140	155	842	184	732	157	668	141	443000	1950	100	83	567	24	M 22	130	84,1	4205-460402-TC0000		
480	575	177	140	155	870	186	757	158	692	142	481500	2000	99	83	567	25	M 22	130	88,0	4205-480402-TC0000		
500	595	177	140	155	885	185	776	158	711	141	501500	2000	95	80	567	25	M 22	130	91,6	4205-500402-TC0000		
520	615	177	140	155	936	193	815	162	744	145	584000	2250	103	87	567	28	M 22	130	94,1	4205-520402-TC0000		
540	635	177	140	155	952	192	833	162	763	144	606500	2250	99	84	567	28	M 22	130	97,5	4205-540402-TC0000		
560	655	177	140	155	990	196	865	165	791	146	674000	2400	102	88	567	30	M 22	130	101	4205-560402-TC0000		
580	675	177	140	155	1006	195	884	165	811	146	698000	2400	99	85	567	30	M 22	130	104	4205-580402-TC0000		
600	695	177	140	155	1022	194	902	164	830	146	722000	2400	95	83	567	30	M 22	130	108	4205-600402-TC0000		

## Germany

**RINGSPANN GmbH**

Schaberweg 30 - 38, 61348 Bad Homburg, Germany  
+49 61 72 2750  
info@ringspann.de • www.ringspann.de

**RINGSPANN RCS GmbH**

Hans-Mess-Straße 7, 61440 Oberursel, Germany  
+49 61 72 67 68 50  
info@ringspann-rcs.de • www.ringspann-rcs.de

## France

**SIAM - RINGSPANN S.A.**

23 rue Saint-Simon, 69009 Lyon, France  
+33 4 78 83 59 01  
info@siam-ringspann.fr • www.ringspann.fr

## Great Britain, Ireland

**RINGSPANN (U.K.) LTD.**

3, Napier Road, Bedford MK41 0QS, Great Britain  
+44 12 34 34 25 11  
info@ringspann.co.uk • www.ringspann.co.uk

## Italy

**RINGSPANN Italia S.r.l.**

V.le A. De Gasperi, 31, 20020 Lainate (MI), Italy  
+39 02 93 57 12 97  
info@ringspann.it • www.ringspann.it

## Netherlands, Belgium, Luxembourg

**RINGSPANN Benelux B.V.**

Nieuwenkampsmaten 6-15, 7472 De Goor,  
Netherlands • +31 547 26 13 55  
info@ringspann.nl • www.ringspann.nl

## Austria, Hungary, Slovenia

**RINGSPANN Austria GmbH**

Kleegasse 9, 2624 Breitenau, Austria  
+43 26 35 62446  
info@ringspann.at • www.ringspann.at

## Poland

Radius-Radpol Wiecheć Sp.J.

ul. Kolejowa 16 b, 60-185 Skórzewo, Poland  
+48 61 814 39 28 • info@radius-radpol.com.pl  
www.radius-radpol.com.pl

## Romania, Bulgaria

S.C. Divers Util Service S.R.L.

Str. Fratii Golesti, B1 S8, Sc B, Parter, Pitesti,  
Judetul Arges, Romania • +4 248 22 22 37  
info@rulmentipitesti.ro • www.rulmentipitesti.ro

## Sweden, Finland, Denmark, Norway,

## Baltic states

**RINGSPANN Nordic AB**

Industrigatan 7, 61933 Trosa, Sweden  
+46 156 190 98  
info@ringspann.se • www.ringspann.se

## Switzerland

**RINGSPANN AG**

Sumpfstrasse 7, 6300 Zug, Switzerland  
+41 41 748 09 00  
info@ringspann.ch • www.ringspann.ch

## Spain, Portugal

**RINGSPANN IBERICA S.A.**

C/Uzbina, 24-Nave E1, 01015 Vitoria, Spain  
+34 945 22 77-50  
info@ringspann.es • www.ringspann.es

## Czech Republic, Slovakia

Ing. Petr Schejbal

Mezivříš 1444/27, 14700 Prag, Czech Republic  
+420 222 96 90 22  
Petr.Schejbal@ringspann.cz • www.ringspann.com

## Asia

## Australia, New Zealand

Kempower Pty. Ltd.

6 Phoenix Court, Braeside 3195, Victoria, Australia  
+61 3 95 87 90 33 • sales@imtec-kempower.com.au  
www.imtec-kempower.com.au

## China, Taiwan

**RINGSPANN Power Transmission (Tianjin) Co., Ltd.**

No. 21 Gaoyan Rd., Binhai Science and Technology  
Park, Binhai Hi-Tech Industrial, Development Area,  
Tianjin, 300458, P.R. China • +86 22 59 80 31 60  
info.cn@ringspann.cn • www.ringspann.cn

## India, Bangladesh, Nepal

**RINGSPANN Power Transmission India Pvt. Ltd.**

GAT No: 679/2/1, Village Kuruli, Taluka Khed,  
Chakan-Alandi Road, Pune - 410501, India  
+91 21 35 67 75 00 • info@ringspann-india.com  
www.ringspann-india.com

## Kazakhstan, Central Asia

Industrial Drive LLP

193, Furmanov Street, 050013 Almaty, Kazakhstan  
+7 727 350 58 68  
info@promprivod.kz • www.promprivod.kz

## Singapore, ASEAN

RINGSPANN Office

Arthur Low, 1 Scotts Road, #21-10 Shaw Centre,  
Singapore 228208 • +65 96 33 66 92  
Arthur.Low@ringspann.com • www.ringspann.com

## America

## Brazil

Antares Acoplamentos Ltda.

Rua Evaristo de Antoni, 1222, Caxias do Sul, RS,  
CEP 95041-000, Brazil • +55 54 32 18 68 00  
vendas@antaresacoplamentos.com.br  
www.antaresacoplamentos.com.br

## USA, Canada, Mexico, Chile, Peru

**RINGSPANN Corporation**

10550 Anderson Place, Franklin Park, IL 60131, U.S.A  
+1 847 678 35 81  
info@ringspanncorp.com • www.ringspanncorp.com

## Africa and Middle East

## Egypt

Shofree Trading Co.

218 Emtedad Ramsis 2, 2775 Nasr City, Cairo, Egypt  
+20 2 20 81 20 57  
info@shofree.com • www.ringspann.com

## Iran

Persia Robot Machine Co. Ltd.

4th Floor, No 71, Mansour St, Motahari Avenue,  
Tehran 15957, Iran • +98 21 88 70 91 58-62  
forootan@persiarobot.com • www.ringspann.com

## Israel

G.G. Yarom Rolling and Conveying Ltd.

6, Hamaktesh Str., 58810 Holon, Israel  
+972 3 557 01 15  
noam\_a@gg.co.il • www.ringspann.com

## Maghreb, West Africa

**SIAM - RINGSPANN S.A.**

23 rue Saint-Simon, 69009 Lyon, France  
+33 4 78 83 59 01  
info@siam-ringspann.fr • www.ringspann.fr

## South Africa, Sub-Saharan

**RINGSPANN Transmission Components (Pty) Ltd.**

96 Plane Road Spartan, Kempton Park,  
P.O. Box 8111 Edenglen 1613, South Africa  
+27 11 394 18 30  
info@ringspann.co.za • www.ringspann.co.za